



RPA40 Polyclonal Antibody

| | |
|---------------------------|---|
| Catalog No | YP-Ab-01993 |
| Isotype | IgG |
| Reactivity | Human;Mouse |
| Applications | WB;ELISA |
| Gene Name | POLR1C |
| Protein Name | DNA-directed RNA polymerases I and III subunit RPAC1 |
| Immunogen | The antiserum was produced against synthesized peptide derived from human POLR1C. AA range:101-150 |
| Specificity | RPA40 Polyclonal Antibody detects endogenous levels of RPA40 protein. |
| Formulation | Liquid in PBS containing 50% glycerol, 0.5% BSA and 0.02% sodium azide. |
| Source | Polyclonal, Rabbit,IgG |
| Purification | The antibody was affinity-purified from rabbit antiserum by affinity-chromatography using epitope-specific immunogen. |
| Dilution | Western Blot: 1/500 - 1/2000. ELISA: 1/40000. Not yet tested in other applications. |
| Concentration | 1 mg/ml |
| Purity | ≥90% |
| Storage Stability | -20°C/1 year |
| Synonyms | POLR1C; POLR1E; DNA-directed RNA polymerases I and III subunit RPAC1; DNA-directed RNA polymerase I subunit C; RNA polymerases I and III subunit AC1; AC40; DNA-directed RNA polymerases I and III 40 kDa polypeptide; RPA40; RPA39; RPC40 |
| Observed Band | 39kD |
| Cell Pathway | Nucleus . |
| Tissue Specificity | Brain,Ovarian carcinoma,Placenta,Umbilical cord blood, |
| Function | function:DNA-dependent RNA polymerase catalyzes the transcription of DNA into RNA using the four ribonucleoside triphosphates as substrates. Common component of RNA polymerases I and III which synthesize ribosomal RNA precursors and small RNAs, such as 5S rRNA and tRNAs, respectively. RPAC1 is part of the Pol core element with the central large cleft and probably a clamp element that moves to open and close the cleft.,similarity:Belongs to the archaeal rpoD/eukaryotic RPB3 RNA polymerase subunit family.,subunit:Component of the RNA polymerase I (Pol I) and RNA polymerase III (Pol III) complexes consisting of at least 13 and 17 subunits, respectively., |



Background

The protein encoded by this gene is a subunit of both RNA polymerase I and RNA polymerase III complexes. The encoded protein is part of the Pol core element. Mutations in this gene have been associated with Treacher Collins syndrome (TCS) and hypomyelinating leukodystrophy 11. Alternative splicing results in multiple transcript variants. [provided by RefSeq, Jan 2016],

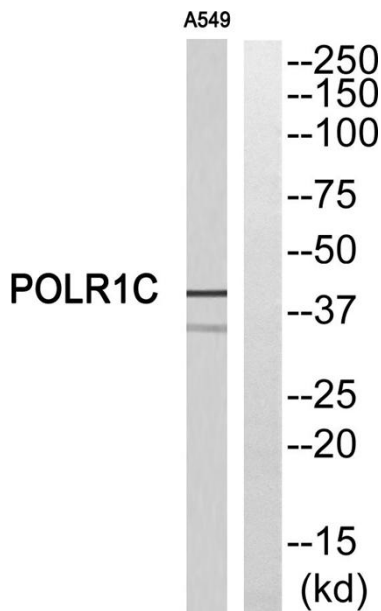
matters needing attention

Avoid repeated freezing and thawing!

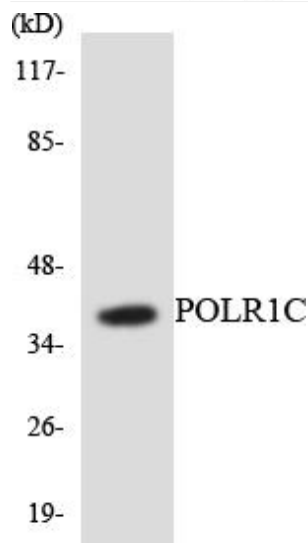
Usage suggestions

This product can be used in immunological reaction related experiments. For more information, please consult technical personnel.

Products Images



Western blot analysis of POLR1C Antibody. The lane on the right is blocked with the POLR1C peptide.



Western blot analysis of the lysates from HepG2 cells using POLR1C antibody.